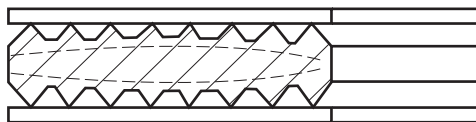


camprofile (grooved) gasket CAM05

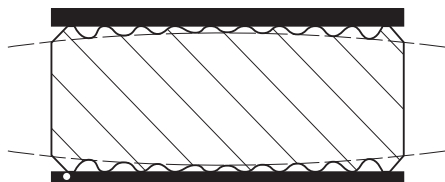
gasket spec



description

grooved gaskets consist of the metallic piece with grooves in combination with the special properties of the soft covering materials that result has optimal properties and consistency. metal gaskets with grooved faces have proven to be very effective for sealing flange connections and are particularly suitable for applications where high temperatures, high pressures and fluctuating conditions are encountered. interaction of the combining materials ensures reliability and the highest anti-blow-out properties. their application is intended for difficult sealing conditions when performance is critical and sealing stresses are low. non-metal sealing elements ensure that flanges are not damaged even at extreme loads and provide excellent sealing properties and enhance the reliability of a solid metal-to-metal seal.

special convex shape of cam profile CAM05



the convex profile is suitable for weak flange construction (low bolt forces).

principle of sealing

during tightening is covering layer with low density compressed to high density. the grooved face is constructed in such a way that in the case of a covering layer the highly compressed layer fills the grooves of the camprofile. only 0.1-0.2 mm of layer remains above groves. this makes very little diffusion possible through the sealing material, while also preventing damage to the flanges by the grooves.

level of sealing surfaces

0,8 - 6,3 μm Ra

the sealing surfaces would be in a parallel way together, so as the deviation value wasn't greater then 0,4mm per all sealing surface. the sealing surfaces would be uniplanar, so as the deviation value wasn't greater then 0,2mm per width of gasket.

materials

cam profiled ring : carbon steel

stainless steel 316L

stainless steel 304

stainless steel 321

soft cover : expanded graphite

PTFE

up to temperature 550°C

up to temperature 260°C, for very aggressive media and to food and farmaceutical media

pressure using

up to 40 Mpa

using

heat exchangers, vessels, reactors and various flange connection

their application is intended for difficult sealing conditions when performance is critical and sealing stresses are low.

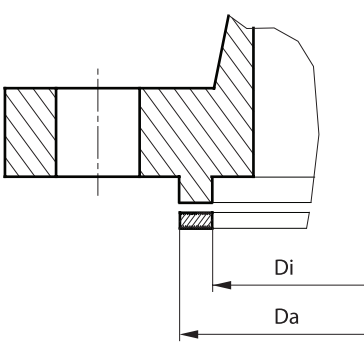
tolerances of cam-profiled gasket

nominal dimension		inner diameter	outer diameter
mm	inch	mm	mm
4-200	1/2-8	$\pm 0,4$	$\pm 0,8$
250-600	10-24	$\pm 0,8$	$\pm 0,8$
650-850	26-34	$\pm 0,8$	$\pm 0,8$
1500-..	36-60	$\pm 1,25$	$\pm 0,8$

tolerance of thickness $+0/-0,25$

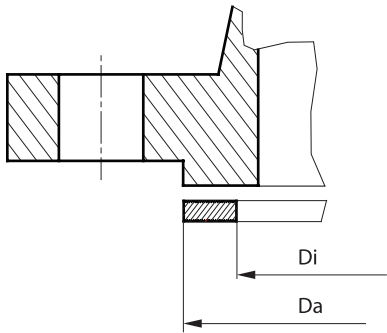


dimensions of cam- profile gasket
according to 1514-4 type tongue groove



Type TG		
DN	Di	Da
4-6	20	30
8	22	32
10	24	34
15	29	39
20	36	50
25	43	57
32	51	65
40	61	75
50	73	87
65	95	109
80	106	120
100	129	149
125	155	175
150	183	203
175	213	233
200	239	259
250	292	312
300	343	363
350	395	421
400	447	473
450	497	523
500	549	575
600	649	675
700	751	777
800	856	882
900	961	987
1000	1062	1092

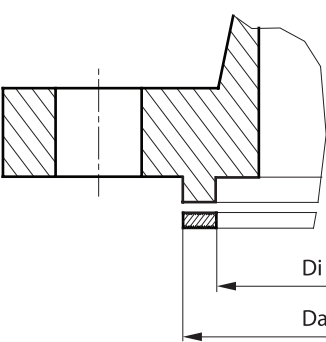
according to EN1514-4 type male-female



Type SR		
DN	Di	Da
10	18	34
15	22	39
20	28	50
25	34	57
32	43	65
40	49	75
50	61	87
65	77	109
80	90	120
100	115	149
125	141	175
150	169	203
175	195	233
200	220	259
250	273	312
300	324	363
350	356	421
400	407	473
450	458	523
500	508	575
600	610	675
700	712	777
800	813	882
900	915	987
1000	1016	1092

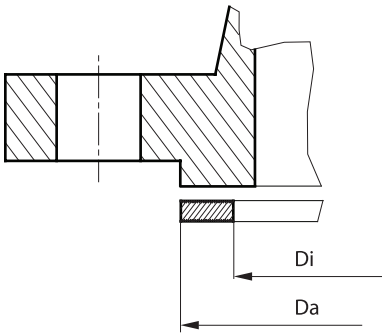


according to ASME B16.5 type tongue groove



ASME B16.5		
Type TG		
DN	Di	Da
1/2"	26	35
3/4"	34	43
1"	38	51
1 1/4"	48	64
1 1/2"	54	73
2"	73	92
2 1/2"	86	105
3"	108	127
4"	132	157
5"	160	186
6"	190	216
8"	238	270
10"	286	324
12"	343	381
14"	374	413
16"	424	470
18"	489	533
20"	534	584
24"	642	692

according to ASME B16.5 type male-female



ASME B16.5		
Type SR		
DN	Di	Da
1/2"	21	35
3/4"	27	43
1"	33	51
1 1/4"	42	63
1 1/2"	48	73
2"	60	92
2 1/2"	73	105
3"	89	127
4"	114	157
5"	141	186
6"	168	216
8"	219	270
10"	273	324
12"	324	381
14"	356	413
16"	406	470
18"	457	533
20"	508	584
24"	610	692